



## Indoor Scanning LiDAR YRL Series

### Wide Field of View

YRL series are 2D/3D scanning LiDAR (Light Detection and Ranging) and optimized solutions for indoor applications covering wide fields of view, as a single channel. The YRL is based on direct ToF (Time of Flight) and is designed to measure distances from its surroundings and collect point cloud datas.

### Key Feature

- ✓ ToF (Time of Flight) Single Channel LiDAR
- ✓ Low Cost and Compact
- ✓ Wider Field of View
- ✓ Adjustable Vertical Angle (Only 3D LiDAR)
- ✓ ROS Compatible
- ✓ Quick and Scalable Software Support



### Indoor Scanning LiDAR, YRL Series

YRL series is an optimized solution for object detection, indoor mapping, modeling, navigation, localization, and other uses in robotics and industry.



**Field of View**  
\*Only YRL3



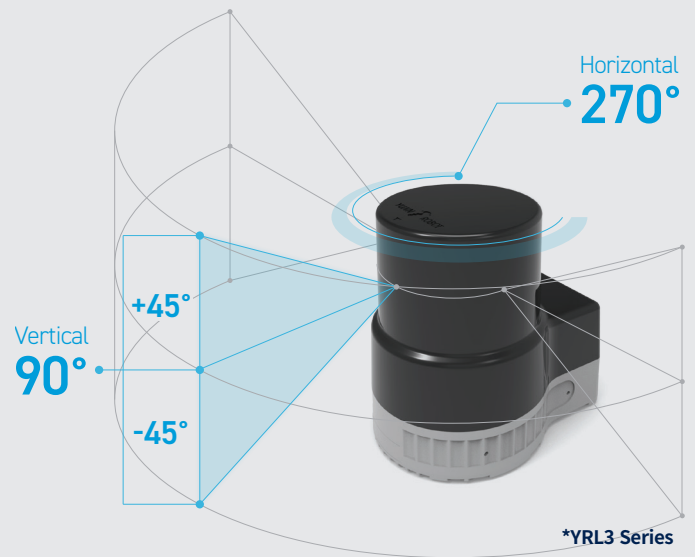
**Compact**



**Enclosure Rating**



**Eye Safety**



### Applications



#### Service Robots

- Mapping and Localization
- Workplace Identification
- SLAM



#### AGVs/AMRs

- Anti-collision
- Object Detection
- Workplace Identification



#### Industrial

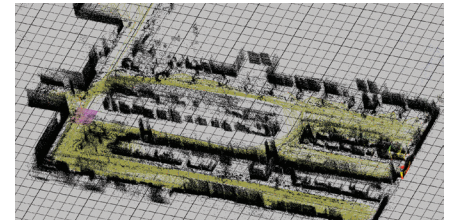
- High-speed Precision Control
- Hazardous Area Protection
- Collision Avoidance and Warning



## YUJIN SLAM & Navigation

The YRL 2/3 series is for a variety of applications such as robotics, industrial, and more. Powered by ROS (Robot Operating System), they provide more accurate and flexible data to your mobility solution for a vast range of robotic applications.

- **YUJIN SLAM Algorithm**
- **ROS Compatible**
- **Point Cloud Map Building**
- **Navigation** (Local Map, Path Planning, Tracking)



## Specifications

YRL series	Environment		Indoor					
	Type		2D LiDAR			3D LiDAR		
	Model Name		YRL2-05	YRL2-10	YRL2-20	YRL3-05	YRL3-10	YRL3-20
Basic	Measurement Range		0.1m~5m	0.1m~10m	0.1m~20m	0.1m~5m	0.1m~10m	0.1m~20m
	Collection Angle	Horizontal	270°					
		Vertical	-					90° (-45° ~ +45°)
	Laser Class		Class 1, eye safety (IEC 60820-1:2014)					
	Laser Wavelength		905nm					
	Scanning Frequency	Horizontal	20Hz					
		Vertical	-					0.57Hz (1scan 1.76sec. If vertical 90°)
	Range Resolution		<10mm					
Angular Resolution	Horizontal	0.55°						
	Vertical	-					0.35° (257 steps)	
Performance	Sampling Rate		130,000					
	Data Packet Rate		9,750					
	Response Time		>50ms			>50ms per layer		
Interface	Communication Interface		100Mbps Ethernet					
	Optical Indicators		1 x LED (Green : Available, Red: Error)					
	Output Data		Horizontal Angle, Range, Intensity, Cartesian coordinates (x,y)			Horizontal Angle, Vertical Angle, Range, Intensity, Cartesian coordinates (x,y,z)		
Mechanics/ Electronics	Electrical Connection		1 x M8 for Power, 1 x M12 for Data					
	Supply Voltage		DC 12V					
	Power Consumption		5W			6W		
	Material		Top window cover (PC), Bottom cover (AL)					
	Enclosure Rating(IP)		IP 67					
	Temperature Resistance		-10 ° ~ 50 °					
	Weight		400g					
Dimension (WxDxH)		65mm x 85mm x 91.40mm						
Certificates and Compliance		KC, CE, RoHS						

\* Specifications and design are subject to change without any prior notice.