

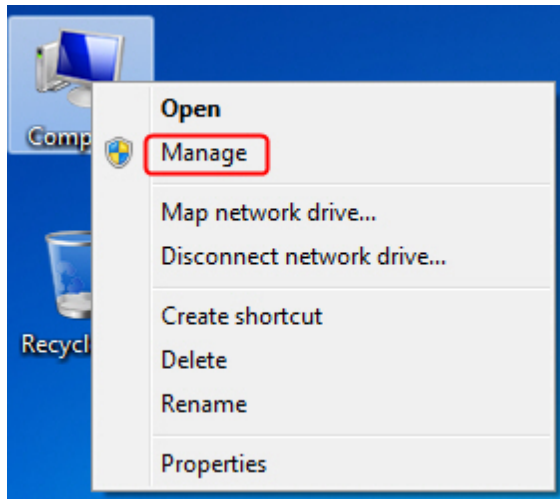
## Installing LightWare SF30/D in Windows 7

### Step 1

Insert the adapter onto your computer.

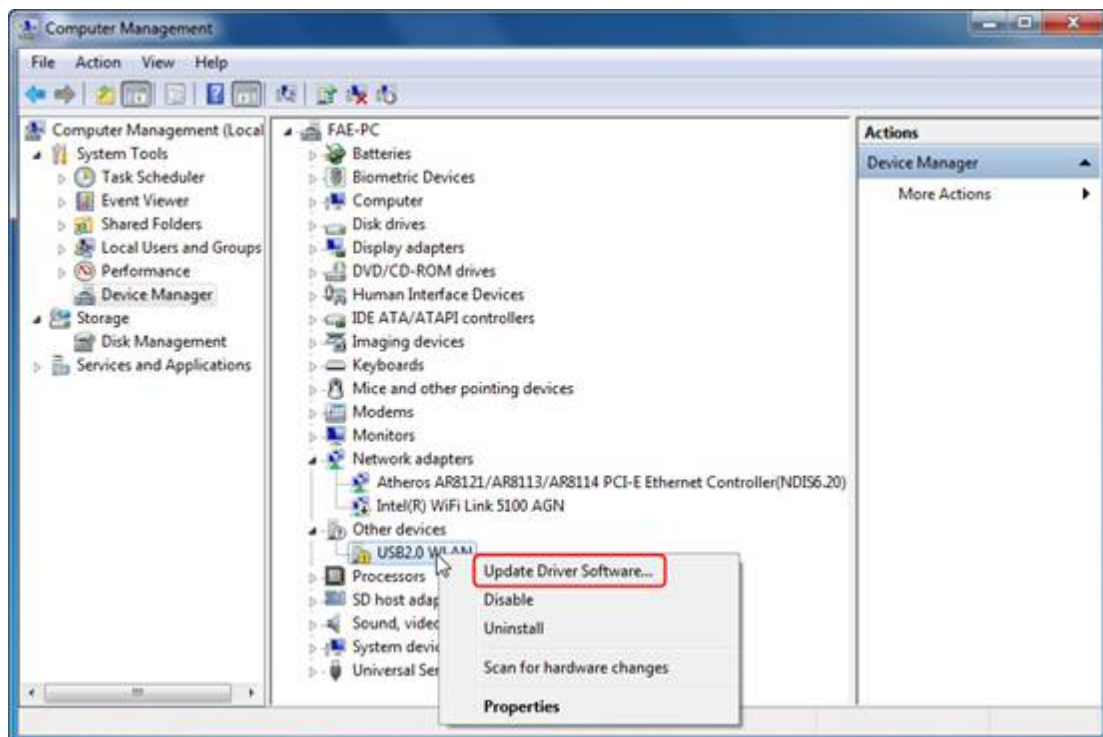
### Step 2

Right click *Computer*, and then click *Manage*.



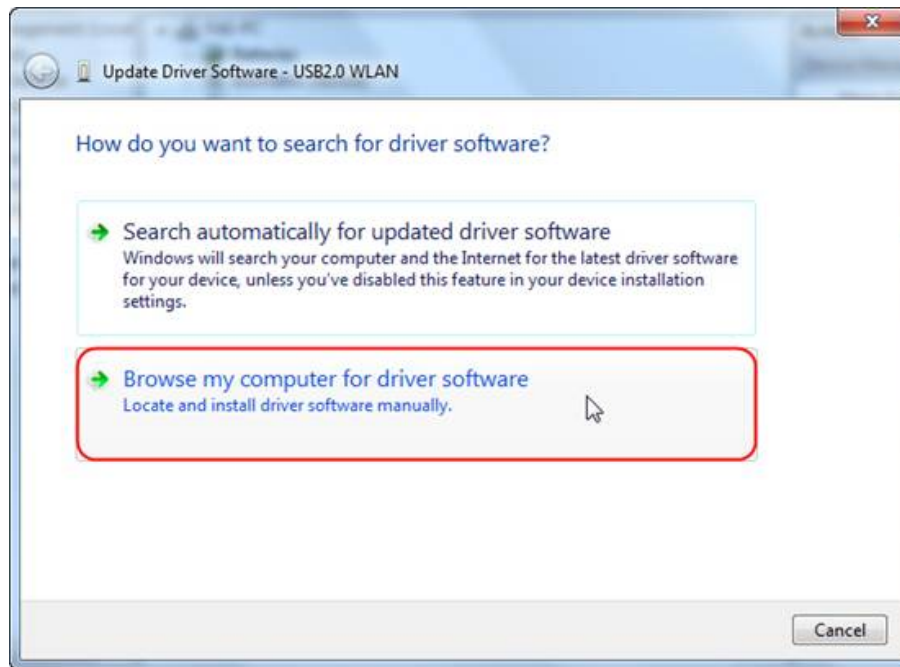
### Step 3

Open *Device Manager*. Right click the adapter and then click *Update Driver Software....*



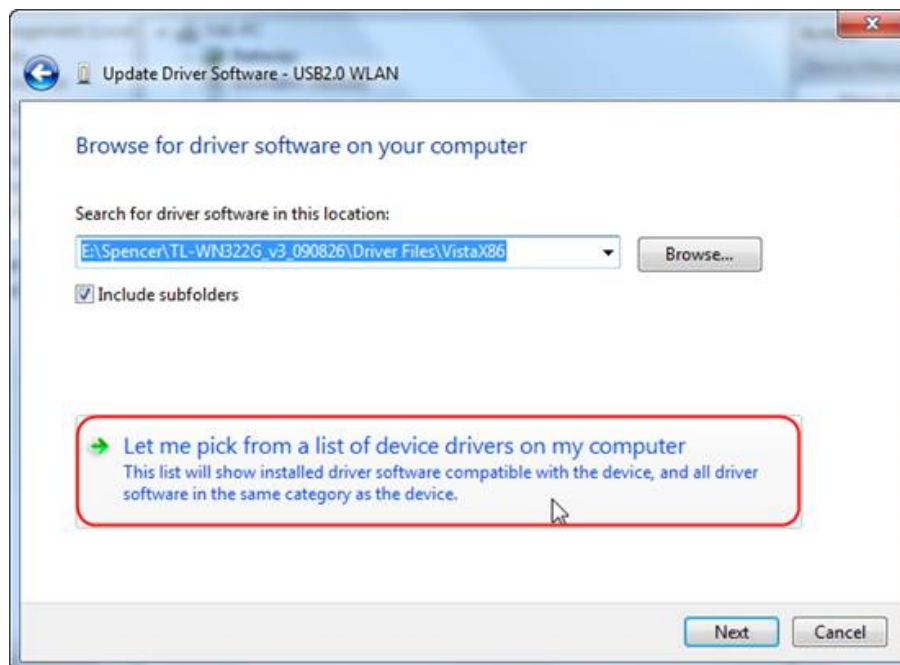
### Step 4

Click *Browse my computer for driver software*.



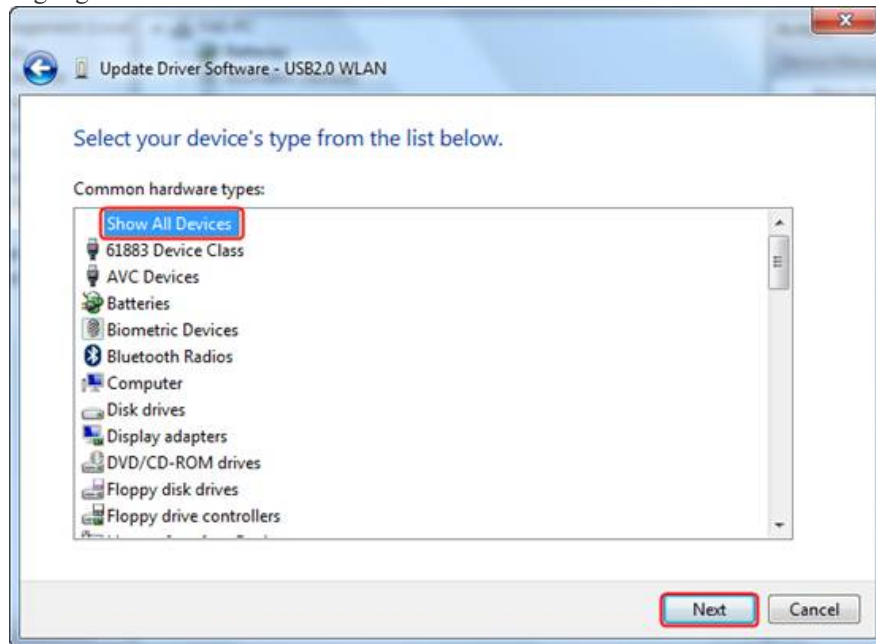
#### Step 5

Click *Let me pick from a list of device drivers on my computer*.



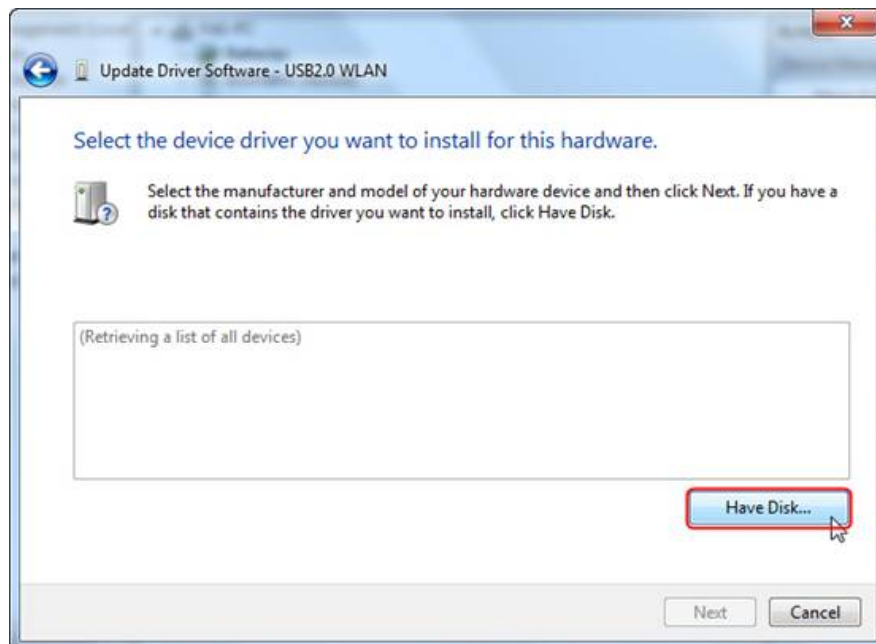
## Step 6

Highlight **Show All Devices** and click *Next*.



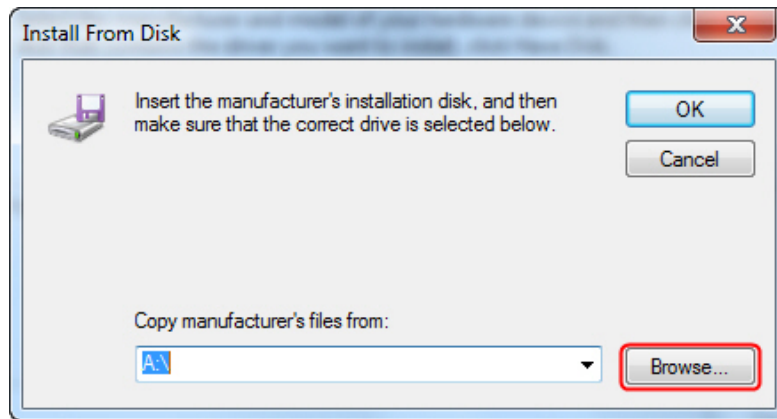
## Step 7

Click *Have Disk*.



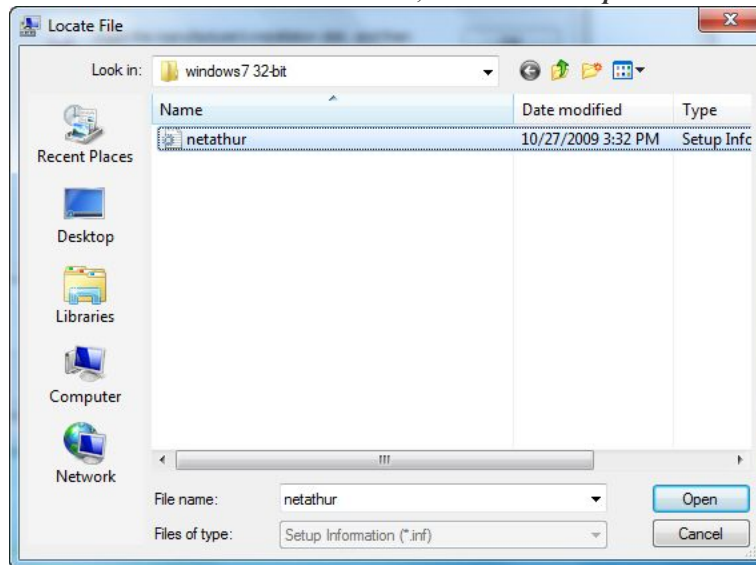
## Step 8

Click ***Browse***.



## Step 9

Point to the inf file in the driver folder, and then click *Open*.



Note: Please click *start* button, right click *Computer* and go to *properties* to confirm operating system and system type of your computer.

### View basic information about your computer

#### Windows edition

Windows 7 Ultimate

Copyright © 2009 Microsoft Corporation. All rights reserved.

Service Pack 1

#### System

Rating:



Your Windows Experience Index needs to be refreshed

Processor:

Pentium(R) Dual-Core CPU E5500 @ 2.80GHz 2.80 GHz

Installed memory (RAM):

2.00 GB

System type:

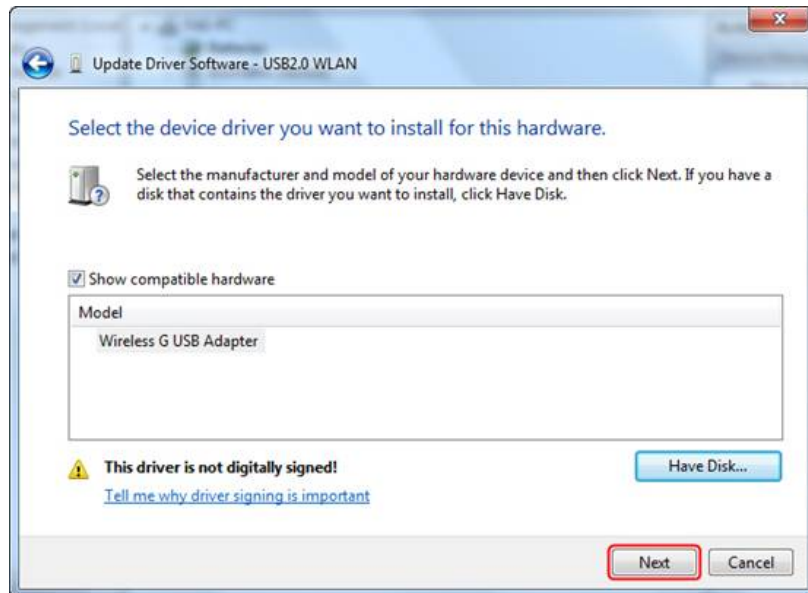
32-bit Operating System

Pen and Touch:

No Pen or Touch Input is available for this Display

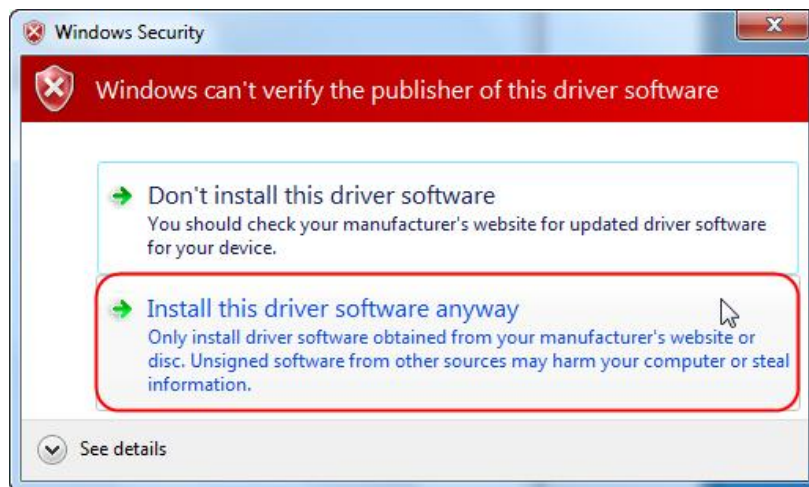
## Step 10

Click *Next*.



## Step 11

Click *Install this driver software anyway*.



## Step 12

Click *Close*.

